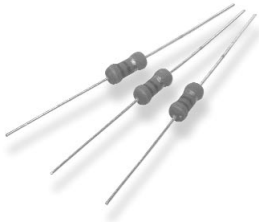


Type ROX Series

Type ROX Series



The resistive element comprises a metal oxide film deposited on a ceramic former. The element is protected by a flameproof coating which will withstand overload conditions without flame or mechanical damage. They are recommended for use in applications such as line protection etc...

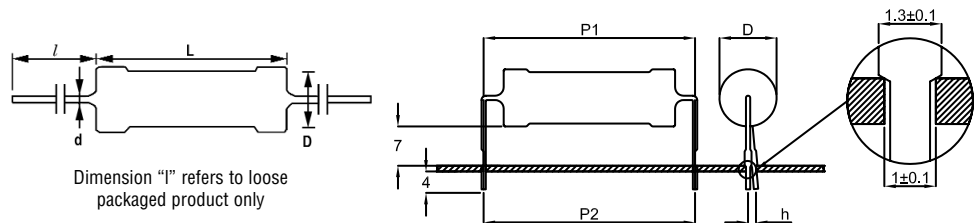
Key Features

- High Power with Small Size for Space Saving
- Excellent Long Term Stability
- Complete Flameproof Construction
- High Surge/Overload Capability
- Controlled Temperature Capability
- Solvent Resistant Coat and Code
- Special Lead Formations Possible

Characteristics - Electrical

| | ROX05 | ROX1 | ROX2 | ROX05S | ROX1SS | ROX1S | ROX2S | ROX3S | ROX5S | |
|---------------------------------------|-------------|------|------|--------|--------|-------|-------|-------|-------|--|
| Rated Power @ 70°C (W) | 0.5 | 1 | 2 | 0.5 | 1 | 1 | 2 | 3 | 5 | |
| Resistance Range (ohms) Min | 0.1 | 0.1 | 0.1 | 0.1 | 0.1 | 0.1 | 0.1 | 0.1 | 0.1 | |
| Max | 330K | 470K | 560K | 100K | 200R | 270K | 470K | 560K | 560K | |
| Tolerance (%) | | | 2 | | 5 | | | | | |
| Code Letter | | | G | | J | | | | | |
| Temperature Coefficient Max (ppm/°C) | | | | | | ± 300 | | | | |
| Selection Series | E24 | | | | | | | | | |
| Limiting Element Voltage (V) | 250 | 350 | 350 | 250 | 350 | 350 | 350 | 350 | 500 | |
| Maximum Overload Voltage (V) | 400 | 600 | 600 | 400 | 400 | 600 | 600 | 600 | 800 | |
| Max Intermittent Overload Voltage (V) | 500 | 750 | 750 | 500 | 500 | 750 | 750 | 750 | 1500 | |
| Operating Temperature Range (°C) | -55 to +235 | | | | | | | | | |
| Climatic Category | 55/235/56 | | | | | | | | | |
| Dielectric Strength (V) | 250 | 350 | 350 | 250 | 350 | 350 | 350 | 350 | 500 | |
| Insulation Resistance (Mohms) | 1,000 | | | | | | | | | |

Dimensions



Standard Range Ledged

| Style | L ±1 | D | d nom | l min |
|-------|------|--------|-------|-------|
| ROX05 | 9 | 3 ±0.5 | 0.7 | 25 |
| ROX1 | 11 | 4 ±0.5 | 0.7 | 25 |
| ROX2 | 16 | 6 ±1 | 0.8 | 35 |

"S" Range Ledged

| Style | L ±1 | D ±0.5 | d nom | l min |
|--------|-------|--------|-------|-------|
| ROX05S | 6.5 | 2.3 | 0.6 | 25 |
| ROX1SS | 6.5 | 2.3 | 0.6 | 25 |
| ROX1S | 9 | 3 | 0.7 | 25 |
| ROX2S | 11 | 4 | 0.8 | 25 |
| ROX3S | 15 | 5.5 | 0.8 | 35 |
| ROX5S | 25 ±2 | 8.5 ±1 | 0.8 | 35 |

Standard Range Pre-formed

| Style | P1 ±0.5 | P2 ±2 | H1 | H2 | h max |
|-------|---------|-------|----------|--------|-------|
| ROX05 | 12.5 | 12.5 | 7.5 ±1.5 | 3.5 ±1 | 2.0 |
| ROX1 | 15 | 15 | 7.5 ±1.5 | 3.5 ±1 | 2.0 |
| ROX2 | 20 | 20 | 7.5 ±2.0 | 3.5 ±1 | 3.0 |

"S" Range Pre-formed

| Style | P1 ±0.5 | P2 ±2 | H1 | H2 | h max |
|--------|---------|-------|----------|--------|-------|
| ROX05S | 10 | 10 | 7.5 ±1.5 | 3.5 ±1 | 2.0 |
| ROX1SS | 10 | 10 | 7.5 ±1.5 | 3.5 ±1 | 2.0 |
| ROX1S | 12.5 | 12.5 | 7.5 ±0.5 | 3.5 ±1 | 2.0 |
| ROX2S | 15 | 15 | 7.5 ±1.5 | 3.5 ±1 | 2.9 |
| ROX3S | 20 | 20 | 7.5 ±2.0 | 3.5 ±1 | 3.0 |
| ROX5S | 30 | 30 | 7.5 ±2.0 | 3.5 ±1 | 3.0 |

Mounting

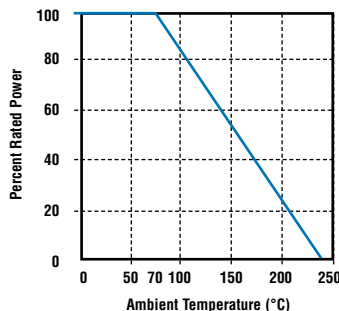
The resistors are suitable for processing on automatic insertion equipment and cutting and bending machines.

Marking

The resistors are marked with a four-band colour code in accordance with IEC 62.

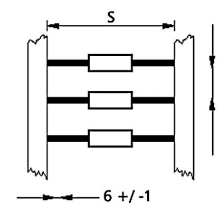
Type ROX Series

Derating Curve



Packaging

| New Style Reference | Quantity per Ammo Pack | Std tape Spacing *S ±1 | Component Spacing c ±0.5 |
|---------------------|------------------------|------------------------|--------------------------|
| ROX05 | 2,000 | 52 | 5 |
| ROX1 | 1,000 | 52 | 5 |
| ROX2 | 1,000 | 63 | 10 |
| ROX05S | 2,000 | 52 | 5 |
| ROX1SS | 2,000 | 52 | 5 |
| ROX1S | 2,000 | 52 | 5 |
| ROX2S | 1,000 | 52 | 5 |
| ROX3S | 1,000 | 63 | 10 |
| ROX5S | 500 | 63 | 10 |



* Other tape spacings available on request
Other packaging styles are available on request

Performance Characteristics

The evaluation of the performance characteristics is carried out with reference to IEC Specifications QC 400 000 and QC 400 100.

| TEST REF | Long Term Tests ± (5% + 0.1 ohm) |
|----------|------------------------------------|
| 4.23 | Climatic sequence |
| 4.24 | Damp heat, steady state |
| 4.25.1 | Endurance at 70 °C |
| 4.25.3 | Endurance at 235 °C |
| TEST REF | Short Term Tests ± (1% + 0.05 ohm) |
| 4.13 | Overload |
| 4.16 | Robustness of terminations |
| 4.18 | Resistance to soldering heat |
| 4.19 | Rapid change of temperature |
| 4.22 | Vibration |

How to Order

| ROX | 1 | J | 100R |
|---|----------------------------|-----------|--|
| Common Part | Size | Tolerance | Value |
| ROX - Flame-Proof Power Metal Oxide Film Resistor | 1 - 1S 2 - 2S 3 - 3S | J - 5% | 100 ohm (100 ohms) 100R 1K0 ohm (1000 ohms) 1K0 100K ohm (100,000 ohms) 100K |